

EGPL/BEB
BENECULA

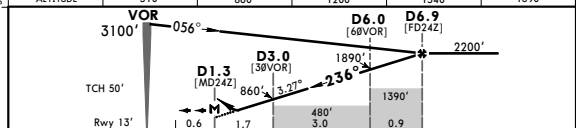
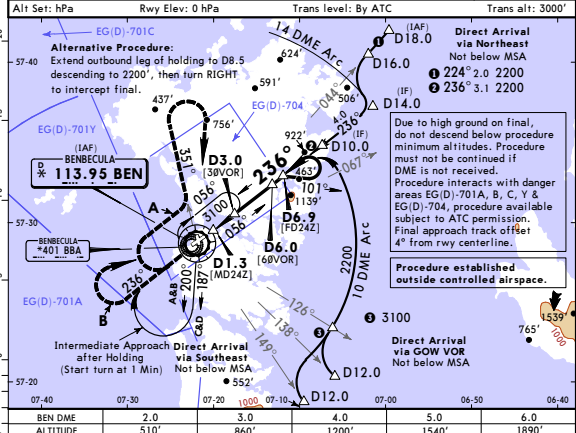
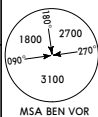
JEPPESEN
14 JUN 19 (13-4) Eff 20 Jun

BENECULA, UK
VOR DME Z Rwy 24

*ATIS 113.950	*BENECULA Approach 119.205	*BENECULA Tower 119.205	*BENECULA Information (Outside ATC hours) 119.205
VOR BEN * 113.95	Final ApcH Crs 236°	Procedure Alt D6.9 2200' (2187')	DA/MDA(H) 330' (317') Apt Elev 19' Rwy 13'

MISSED APCH: Danger Areas Active (A): Climb STRAIGHT AHEAD to 520', then climbing turn RIGHT to intercept and follow R-351 to 1700', then climbing turn RIGHT to return to VOR at 3100'.
 Danger Areas Inactive (B): Climb STRAIGHT AHEAD to 1700', then climbing turn RIGHT to return to VOR at 3100'.
 No turns permitted before MAP.

Alt Set: hPa Rwy Elev: 0 hPa Trans level: By ATC Trans alt: 3000'



Gnd speed-Kts	70	90	100	120	140	160
Descent Angle	3.27°	405	521	579	694	810

MAP at D1.3
Standard

PANS OPS	STRAIGHT-IN LANDING RWY 24		CIRCLE-TO-LAND	
	CDFA			
	DA/MDA(H) 330' (317')		ALS out	
	A		Max Kts	MDA(H) VIS
	B	RVR 1200m	100	480' (461') 1500m
C		135	710' (691') 1600m	
D		180	810' (791') 2400m	
		205	810' (791') 3600m	

EGPL/BEB
BENECULA

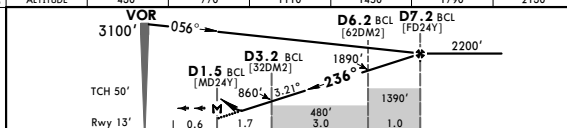
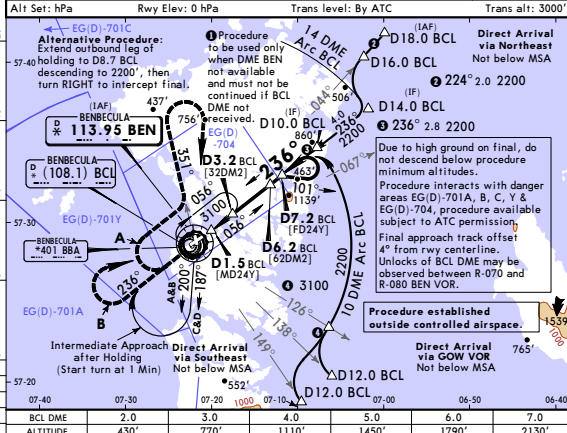
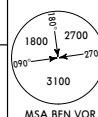
JEPPESEN
14 JUN 19 (13-5) Eff 20 Jun

BENECULA, UK
VOR DME Y Rwy 24

*ATIS 113.950	*BENECULA Approach 119.205	*BENECULA Tower 119.205	*BENECULA Information (Outside ATC hours) 119.205
VOR BEN * 113.95	Final ApcH Crs 236°	Procedure Alt D7.2 BCL 2200' (2187')	DA/MDA(H) 330' (317') Apt Elev 19' Rwy 13'

MISSED APCH: Danger Areas Active (A): Climb STRAIGHT AHEAD to 520', then climbing turn RIGHT to intercept and follow R-351 to 1700', then climbing turn RIGHT to return to VOR at 3100'.
 Danger Areas Inactive (B): Climb STRAIGHT AHEAD to 1700', then climbing turn RIGHT to return to VOR at 3100'.
 No turns permitted before MAP.

Alt Set: hPa Rwy Elev: 0 hPa Trans level: By ATC Trans alt: 3000'



Gnd speed-Kts	70	90	100	120	140	160
Descent Angle	3.21°	398	511	568	682	795

MAP at D1.5 BCL
Standard

PANS OPS	STRAIGHT-IN LANDING RWY 24		CIRCLE-TO-LAND	
	CDFA			
	DA/MDA(H) 330' (317')		ALS out	
	A		Max Kts	MDA(H) VIS
	B	RVR 1200m	100	480' (461') 1500m
C		135	710' (691') 1600m	
D		180	810' (791') 2400m	
		205	810' (791') 3600m	